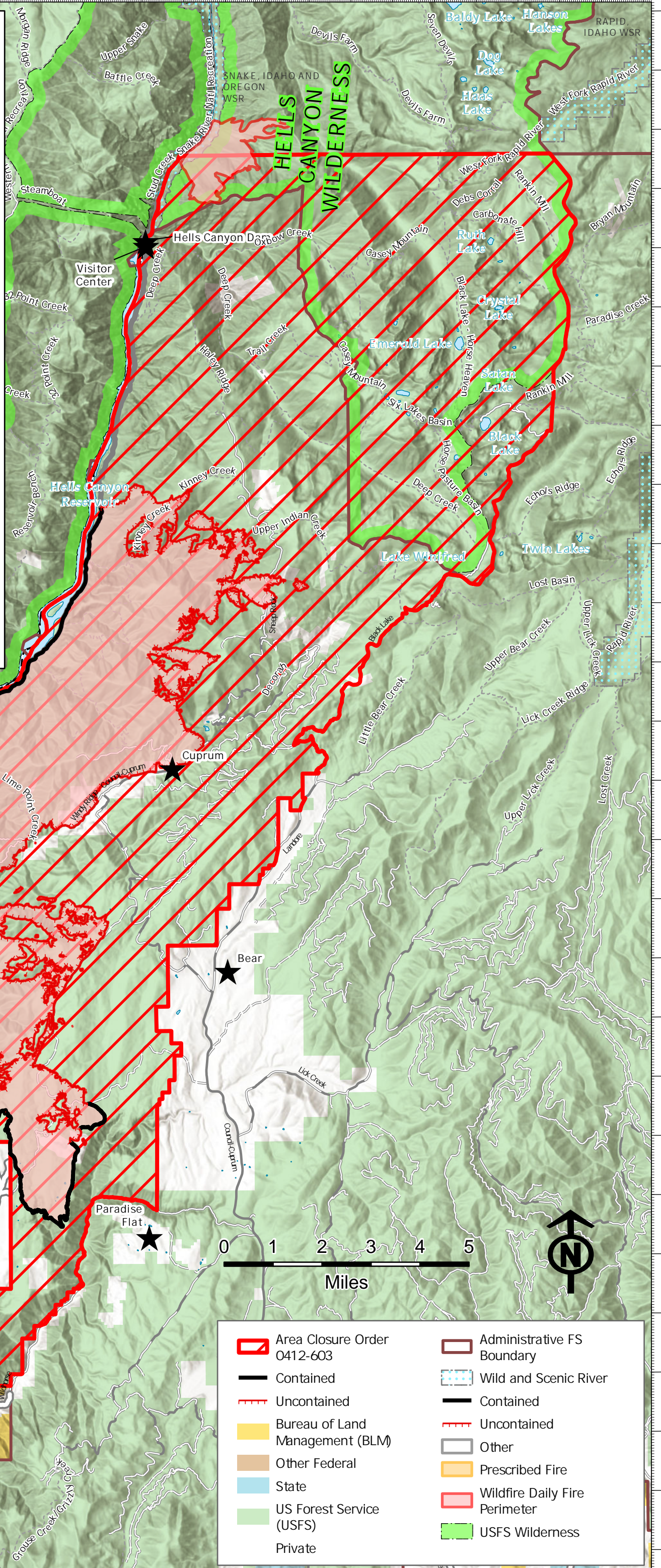
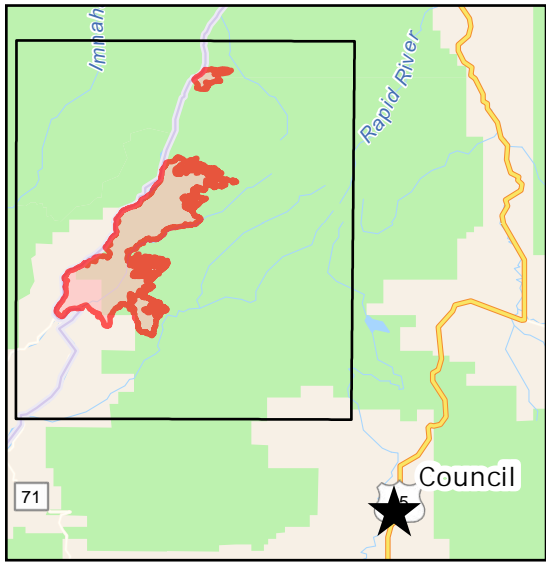


Limepoint & Cliff Mtn.

8/14/2024

31,397 acres
38% Contained



Area Closure Order 0412-603	Administrative FS Boundary
Contained	Wild and Scenic River
Uncontained	Contained
Bureau of Land Management (BLM)	Uncontained
Other Federal	Other
State	Prescribed Fire
US Forest Service (USFS)	Wildfire Daily Fire Perimeter
Private	USFS Wilderness

